

Saturday 21 June 2014



J.P. Morgan Asset Management Round the Island Race



Sailing Instructions

Saturday 21 June 2014

Tel: 01983 296621 Fax: 01983 293214

Email: rir@islandsc.org.uk Web: www.roundtheisland.org.uk

 www.facebook.com/roundtheisland

 @Roundtheisland Tweet for charity #raceforall

J.P.Morgan
Asset Management



Round the
Island Race

Rare Partners



Raymarine



Wight: 07.45 hrs 01/06/13

Wind: 15 knots gusting 26 knots, shifting NNE

Weather: Clear, good visibility

Boat: Bavaria Match 35 - "HKJ Firestarter"

Location: 2013 J.P. Morgan Asset Management Round The Island Race - just off The Needles

HKJ Firestarter: IRC Bavaria Class winner in 2012 and 2013 J.P. Morgan Asset Management Round The Island Races, skippered and crewed by Keith Lovett (who has completed the race 25 times) and Antony James of Haven Knox-Johnston - supporters of the event as race partners for the past 10 years



Haven Boat Insurance
www.boatinsure.co.uk

Together we've got it covered

Call now on 01732 223 650 or visit www.boatinsure.co.uk



SPECIALIST BOAT INSURANCE

We are pleased to support all our clients taking part in this historic race by extending cover at no extra cost.

11 Tower View, Kings Hill, West Malling, Kent ME19 4UY. Haven Knox-Johnston is a trading name of Amlin Underwriting Services Limited. Authorised and regulated by the Financial Conduct Authority



The Ellen MacArthur Cancer Trust takes young people recovering from cancer sailing in order to help rebuild their confidence.



This year, for every team that sets up a www.justgiving.com page and raises over £50.00 we will send a Trust flag to proudly use on race day. Instructions on where to place your flag will be provided.

In the last three years, J.P. Morgan Asset Management Round the Island Race has enabled us to work with over 200 young people recovering from cancer by raising over £130,000. None of this could have been possible without your support.

Please email clare.ryan@emcancertrust.org or call 01983 297750 for more information.

For every #raceforall tweet on the lead up to the race, J.P. Morgan will donate £1.00 to the Ellen MacArthur Cancer Trust.

Come and visit us at Cowes Yacht Haven on the day to have a go on our NEW Sailing Simulator or have your photo taken in our Photobooth! Don't forget to tweet your photos with #raceforall



#raceforall

Thank you for entering the J.P. Morgan Asset Management Round the Island Race...



Welcome to the 2014 J.P. Morgan Asset Management Round the Island Race organised by the Island Sailing Club and we look forward to seeing your boat on the starting line on Saturday 21st June.

Enclosed with these Sailing Instructions is your copy of the Safety Booklet, your unique Declaration/Tankard Collection Form and your Fleet Flag (where applicable), which is to be displayed on your backstay or stern together with any Class identification that the Notice of Race and Sailing Instructions require you to provide and display.

The Island Sailing Club takes the safety of the Race very seriously and we ask you to make sure that your boat is properly equipped and seaworthy and that the safety equipment is well maintained, in date and properly stowed. It is also very important that other members of your crew know how to utilise it if you were to become incapacitated through illness or injury. Please also make sure that you are familiar with your rights and obligations under the Racing Rules and be courteous to other boats around you whether they are racing or not. For those of you who are not regular racers we have again enclosed a copy of our Layman's Guide to the Racing Rules. Please also remember that it is mandatory to give us a dedicated shore based contact who will have the details of everyone on your boat.

Although not part of the course for the Race, all competitors should be aware of the new Exclusion Zone around the Cowes outer breakwater construction site, especially when returning to Cowes after the Race. Cowes Harbour Commission Local Notice to Mariners No 14 (T) 2014 applies and there is a link to this from our Race website. We are also enclosing, with these Sailing Instructions, an extract which shows the exact area and how the perimeter is marked. The area, with its submerged foundations, chain, wires and anchors, etc., will present a real navigation risk to boats and we urge you all to take great care to avoid straying into any part of the Zone.

Declarations, and tankards for those who have elected to collect them ashore, will again be at the Island Sailing Club or East Cowes Marina and not at the CCC Regatta Centre. Don't forget to take the Tankard Collection Form with you if you have already declared by Text Message. Competitors who are the subject of a protest, or who are required for any reason to go to the Regatta Centre, can collect their tankards there. Tankards will also be available at the Island Sailing Club between 0900 and 1200 noon on Sunday 22nd June before the Prizegiving.

The Round the Island Race has always been a "family affair" and this year there will be more for non-sailing family members to enjoy over the weekend. The Isle of Wight Festival of the Sea which takes place between the 16th and 23rd June will have many activities going on in Cowes, and the Race Village in the Yacht Haven will be larger than ever.

The popular Raymarine Weather Briefing will take place, as usual, at 1800 hours in the Island Sailing Club on Friday 20th June. If you are unable to attend this briefing you will be able to access the video from a link on our website.

I look forward to welcoming as many of you as possible to the Club over the Race weekend and wish you all a safe and enjoyable Race.

A handwritten signature in black ink that reads "John Dudley". The signature is written in a cursive, flowing style.

John Dudley

Commodore, Island Sailing Club



NOTICES

1 Invitation

The Flag Officers and Committee invite all competitors to be visitors of the Island Sailing Club, Cowes on the 20th, 21st and 22nd June 2014.

2 Club Pontoon Restriction

For safety reasons, on the day of the race, competitors may not use the club pontoon for mooring or to embark/disembark personnel. The club pontoon will be reserved exclusively for club launches and authorised support vessels.

3 Ambulance Casualties

Non urgent ambulance casualties should be landed at Trinity Landing, off the Parade, unless otherwise directed. Call the Coastguard on VHF Channel 16 to report intentions and arrange for an ambulance, and inform the Island Sailing Club on VHF Channel 37A (M) or telephone 01983 296621.

4 Radio Press to Transmit Switch

After making a call on the race VHF radio Channel 37A (M), competitors should ensure that the press to transmit switch has been released.

5 Text Declarations

Competitors intending to declare by Text Message (see SI 16) should familiarise themselves with the format to be used, and send a test declaration in advance of the Race to confirm registration of their phone (see page 8 for instructions).

6 Protest Moorings

Boats under 12m (40ft) LOA which are the subject of a protest, and which are not intending to enter Cowes Harbour, may temporarily tie up on the eastern side of the centre pontoon (B1, 2 and 3) in the Royal Yacht Squadron yacht haven.

NAVIGATION AND SEAMANSHIP

1 International Regulations and Byelaws

Attention is drawn to the International Regulations for Preventing Collisions at Sea and to the byelaws issued by Associated British Ports Southampton, Queen's Harbour Master, Portsmouth and Cowes Harbour Master, Cowes as summarised in the SCRA Solent Book 2014/15. These apply at all times of the day and night and shall govern the behaviour of all competitors with respect to other pleasure craft and all commercial vessels.

2 Area of Concern

The following is an extract from ABP Southampton Harbour Byelaws 2003:

11.(1) In this byelaw –“the Precautionary Area” means the main navigable channel which lies between an imaginary line drawn between Prince Consort and South Bramble buoys and an imaginary line drawn between Black Jack and Hook buoys;

“Moving Prohibited Zone” means an area extending 1000 metres ahead and 100 metres either side of any vessel of over 150 metres length overall while it is navigating within the Precautionary Area

(2) The master of a small vessel shall ensure that the vessel does not enter a Moving Prohibited Zone.

(3) For the purpose of indicating the presence of the Moving Prohibited Zone, the master of any vessel of over 150 metres length overall shall display on the vessel, where it can best be seen, by day, a black cylinder, and, by night, 3 all round red lights in a vertical line.

3 Restricted Anchoring

Boats are warned not to anchor or kedge in the area marked on charts by lines from Egypt Point to Stansore Point and from Thorness Bay to Inchmery House, where there are high-tension cables and gas pipes on the sea bed.

4 NEEDLES HAZARDS WARNING

COMPETITORS SHOULD MAKE THEMSELVES AWARE OF THE POSITION OF THE SHALLOW ROCK LEDGE WHICH EXTENDS APPROXIMATELY 250 METRES WSW OF THE NEEDLES LIGHTHOUSE AND OF THE DANGEROUS WRECK WHICH LIES SCATTERED OVER THE LEDGE. ANOTHER HAZARD, GOOSE ROCK, LIES 75 METRES TO THE WNW OF THE LIGHTHOUSE. COMPETITORS ARE ADVISED TO NAVIGATE WELL CLEAR OF THESE DANGERS.

5 Area of Particular Care - THE FORTS

Competitors are referred to the notes in the Safety Booklet about passing No Man's Land Fort and of the extensive wind shadow in its lee.

6 Avoid Fishing Gear

Competitors are reminded of their individual responsibility to avoid damage to fishing gear and should keep a special look out for markers of such gear.

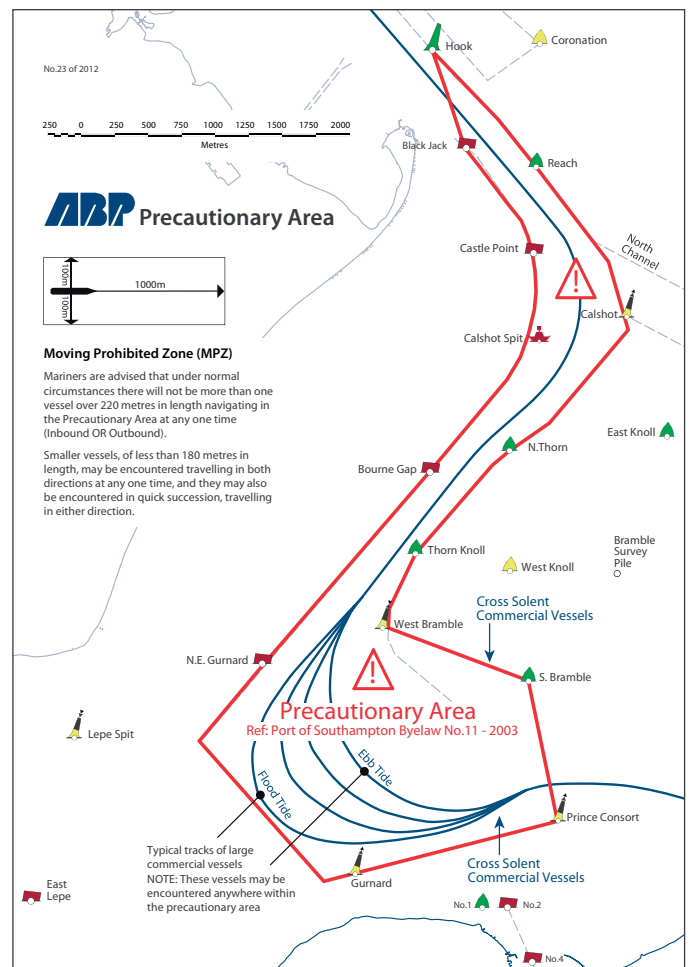
7 Dive Sites

Competitors should be aware of a number of Dive Sites in the Western Solent which are marked with small yellow buoys. See the Safety Booklet for further information.

8 Cowes Breakwater Exclusion Zone

All competitors should be aware of the new Cowes Harbour Commission Breakwater Exclusion Zone around the outer breakwater construction site. CHC Local Notice to Mariners No 14(T) of 2014 applies and an extract from this showing how the perimeter is marked is enclosed with these Sailing Instructions.

DIAGRAM A : PRECAUTIONARY AREA



High Water Portsmouth: 0656 and 1936 All times are BST.

1 RULES

- 1.1 Racing will be governed by the 'rules' as defined in the Racing Rules of Sailing (RRS) with Royal Yachting Association (RYA) Prescriptions, together with, as appropriate: the ISAF Offshore Special Regulations for Category 4 (modified), the IRC Rules Parts A, B & C (including sail limitations, but excluding rule 22.4 except for boats rated as one designs), the MOCRA Rating Rule, the Island Sailing Club Rating System (ISCRS), the Class Rules for boats entered in a one design class, the Notice of Race (NoR) and these Sailing Instructions (SIs).
- 1.2 Where there is conflict between a rule in the Notice of Race and one in the Sailing Instructions, the Sailing Instructions will prevail. This changes RRS 63.7.
- 1.3 Advertising will be as detailed in NoR 7.
- 1.4 The "Moving Prohibited Zone" referred to in the Southampton Harbour Byelaw 2003 No. 11 and SI 8.3.3 shall rank as an obstruction to boats racing (see Diagram A on page 2).
- 1.5 All boats shall comply with Southampton, Portsmouth, Cowes and any other relevant Harbour Byelaws, where applicable.

2 CHANGES TO RACING RULES

- 2.1 RRS 32 is changed in that the Race will not be shortened.
- 2.2 RRS 44 will not apply. Provided that she has not caused injury or serious damage or, despite taking a penalty, gained a significant advantage in the race, a boat that has broken RRS 31 or a rule of RRS Part 2 may accept a time penalty of 2% of her elapsed time rounded to the nearest second (see SIs 14.1 and 14.2).
- 2.3 If the Race Committee sees an infringement by a boat of any of the following Rules: RRS 42 (Propulsion), SIs 2.5, 3.1, 3.2, 3.3, 3.4, 3.5, 4.4, 8.3.4, 9.1, 9.2.5, 10.2.2, or 12.2, it may disqualify the boat without a hearing. A boat so penalised shall be entitled to a hearing on request. This changes RRS 63.1.
- 2.4 The Protest Committee may waive any penalty if it decides that a boat has infringed a rule, other than a rule of Part 2 (When Boats Meet), if the infringement has had no significant effect on the outcome of the Race. This changes RRS 64.1(a).
- 2.5 Boats that have not been given prior approval under Notice of Race 3.8, and are in breach of RRS 77 and Appendix G, may be disqualified without a hearing. This changes RRS 63.1
- 2.6 Other changes to the RRS are included in SIs 6.3, 9.3, 10.1.1, 10.1.2, 10.2.1, 13.1, 15.1, 15.2, 15.3 and 15.4.

3 SAFETY

- 3.1 Anchors stowed on deck shall not protrude over the bow. Except on trimarans, outboard engines shall not be tilted up so as to protrude beyond the transom. Dan buoy flags shall be rolled up so as not to be visible (see NoR 6.10 and 6.11).

- 3.2 All boats shall comply with RRS 1.2 and the requirements for their Class. It is also recommended that a safety harness for each crew member should be carried on board and worn in foul weather.
- 3.3 When flag "Y" (yankee) is displayed, competitors shall wear lifejackets for the duration of the Race (see RRS 40).
- 3.4 All boats shall carry an operational marine VHF radiotelephone equipped with VHF Channels 16, 37A (M), 69 and 72. As an exception to this rule, foreign boats without 37A (M) will be able to receive repeat Race Committee transmissions on VHF Channel 72.
- 3.5 Boats failing to observe the conditions of SI 3.1, 3.2, 3.3, and 3.4 may be disqualified without a hearing (see SI 2.3). Photographic evidence may be used for boats failing to comply with these conditions.
- 3.6 In accordance with RRS 42.3(h), a boat may use its engine in order to avoid collision with commercial shipping, provided that the circumstances that led to her use of the engine were entirely outside her control and she does not gain a significant advantage in the race. Any use of an engine must be reported to the Race Committee on a special form at Cowes Combined Clubs (CCC), Regatta House, Bath Road, Cowes. A boat taking advantage of this rule is not eligible to declare by Text Message (see SI 16.4).

4 ELIGIBILITY

- 4.1 A boat is eligible to race in accordance with the requirements of the Notice of Race.
- 4.2 Upon demand, the owner/person in charge of a boat shall present proof of current membership of the Class Association where appropriate.
- 4.3 Upon demand, a boat's valid measurement or rating certificate shall be presented at the Race Office located at the Island Sailing Club, Cowes (see RRS 78.2).
- 4.4 Random safety inspections will be carried out both before and after racing to check compliance with the Notice of Race and the Sailing Instructions. A boat that either refuses an inspection or fails to give all reasonable assistance to an authorised inspector may be disqualified without a hearing (see SI 2.3).
- 4.5 Boats shall, while racing, display from the backstay (or stern if no backstay is fitted) the fleet flag and, below this, any class identification flag assigned by the Island Sailing Club. Fleet and class identification flag assignments are shown in Table 1 on Page 9. Fleet flags are provided with these instructions, except for the Sunsail Fleet who shall provide and display only their own class identification flag.
- 4.6 Boats are requested to display the title sponsor decals, which will be sent to entrants by the sponsor, on the forward part of the hull on each side of the boat (see NoR 6.9).
- 4.7 The sail number dodgers referred to in NoR 6.14.2 should be displayed when approaching the finishing line on the aft port quarter of the boat for those finishing on the North line and the aft starboard quarter for those finishing on the South line. A held up white board or sheet with stencilled or stuck on large black or blue letters will also be acceptable.

5 COMMUNICATIONS WITH COMPETITORS

5.1 Notices to Competitors

Notices to competitors will be posted on the Internet at www.roundtheisland.org.uk and on the Official Notice Board located outside the Race Office in the lower marquee at the Island Sailing Club (ISC).

5.2 Changes to Sailing Instructions

Any changes to the Sailing Instructions will be posted on the Official Notice Board before 1500 on the 20th June 2014 and on the Internet at www.roundtheisland.org.uk. At the same time, changes will be indicated by displaying IC flag L from both the Island Sailing Club and the Royal Yacht Squadron (RYS) gatehouse flagstaffs, together with the numeral pennant denoting the latest amendment. It is the responsibility of all competitors to obtain the amended written instructions from the Race Office at the Island Sailing Club, or from the event website.

5.3 Radio Communication

The Race Committee will communicate race information to competitors on VHF Channel 37A (M) and VHF Channel 72. No acknowledgement to these announcements will be required and no return traffic will be acknowledged with the exceptions stated in SI 11.1 (Retirements), SI 14.3 (Penalty System) and SI 15.1 (Protests).

5.4 Time Check

A time check signal will be broadcast 25 minutes before the first scheduled start on VHF Channel 37A (M) and 20 minutes before the first scheduled start on VHF Channel 72.

5.5 Race Mobile Communication

The Race Committee may additionally communicate race information to competitors on the Race Mobile Phone referred to in NoR 6.6.

6 SIGNALS MADE ASHORE

6.1 Starting Signals

Starting signals will be made from the Royal Yacht Squadron.

6.2 Postponement

AP accompanied by two sound signals means that the scheduled starts of all races not started are postponed. Detailed instructions will be given on VHF Channel 37A (M) and VHF Channel 72 (see SI 9.2 Special Waiting Areas).

6.3 Abandonment

6.3.1 Flag N over A alone accompanied by three sound signals will mean that ALL races are cancelled and will NOT be re-sailed. This changes RRS Race Signals – Flag “N”.

6.3.2 Flag N over A over the fleet/class identification flag accompanied by two sound signals will mean that the race for that class is cancelled and will NOT be re-sailed. This changes RRS Race Signals - Flag “N”. The Race Committee will also endeavour to inform all boats in the cancelled classes by Text Message.

7 CLASS FLAGS

Fleet flags and Class Identification flags as shown in Table 1 on page 9 will be displayed by the Race Committee when appropriate.

8 THE COURSE

8.1 Course Area

Round the Isle of Wight.

8.2 Course

Boats shall cross the starting line to the Westward, round the Needles Lighthouse, pass St. Catherine’s Point, round Bembridge Ledge Buoy, with all marks being left to PORT and finish by crossing the CORRECT finishing line for their fleet from East to West.

8.3 Prohibitions

8.3.1 Boats shall not pass inside the outer row of small craft moorings to the west of Yarmouth Harbour entrance. Attention is drawn to Yarmouth Harbour Commissioners Local Notice to Mariners No. 6/2005.

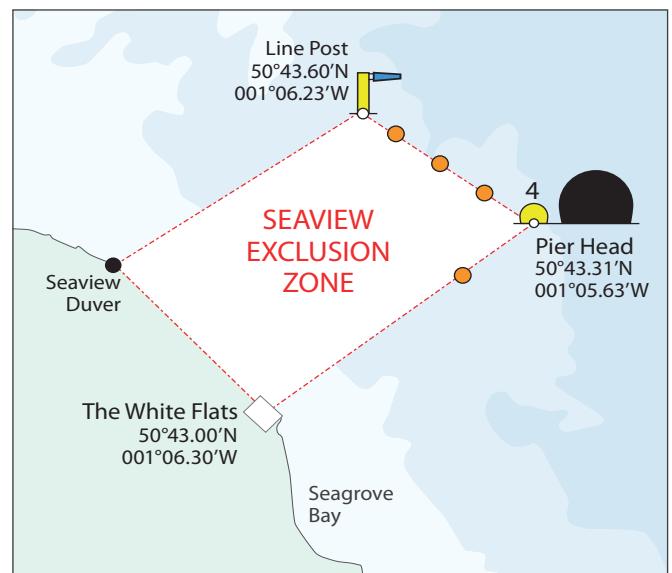
8.3.2 Boats shall not pass to the North of either Horse Sand Fort or the obstructions of the row of iron piles off Durns Point, East of Lymington.

8.3.3 Boats shall not enter the “Moving Prohibited Zone” referred to in Southampton Harbour Byelaw 2003 No 11 (see SI 1.4).

8.3.4 Boats shall not enter the exclusion zone off Seaview.

a) The exclusion zone consists of a box originating from the shoreline at the North end of Seagrove Bay (the white flats) in approximate position 50°43.00’N, 001°06.30’W, out to ‘Pier Head’ which is a yellow spherical buoy marked with numeral ‘4’ (in approximate position 50°43.31’N, 001°05.63’W), NW to the ‘Line Post’ which is a yellow post with blue windsock (in approximate position 50°43.60’N, 001°06.23’W), then directly back to the shoreline at Seaview Duver. There will be a large black inflatable mark laid adjacent to Pier Head. One orange inflatable will be laid on the Eastern side of the box and three orange inflatables will be equally spaced between Pier Head and the Line Post on the Northern side of the zone (see Diagram B). A Local Notice to Mariners defining this area will also be issued shortly before the Race.

DIAGRAM B : SEAVIEW EXCLUSION ZONE



- b) Boats seen to enter the Exclusion Zone will be scored with a time penalty of 5% of the boat's elapsed time rounded to the nearest second, unless the Race Committee decides that the boat has gained a significant advantage in the Race, in which case she may be disqualified without a hearing (see SI 2.3).
- c) RRS 60.1 is changed in that only the Race Committee can protest for infringements of SI 8.3.4.
- d) Boats should be aware of the new Cowes Harbour Commission Breakwater Exclusion Zone around the outer breakwater construction site. The CHC Local Notice to Mariners No 14(T) of 2014 applies and an extract from this showing how the perimeter is marked is enclosed with these Sailing Instructions.

9 THE START

- 9.1 Boats whose fleet warning signal has not been displayed shall keep well clear of the starting line. Boats failing to do so may be disqualified without a hearing (see SI 2.3).
- 9.2 **Special Waiting Areas (see Diagram C)**
 - 9.2.1 In collaboration with ABP Southampton, two areas clear of the deep-water channel have been designated for boats waiting to start.
 - 9.2.2 Boats shall endeavour to stay within these areas until shortly before the starting sequence for their class. In the event of a postponement, the postponed class/classes shall clear the deep-water channel and proceed immediately (under power if necessary) to the nearest designated waiting area where they should remain until the starting sequence is resumed.
 - 9.2.3 The North waiting area is bounded by imaginary lines between South Bramble, Thorn Knoll Buoy, the Bramble Beacon and Wight Vodka.

- 9.2.4 The South waiting area is bounded by imaginary lines between Prince Consort Buoy, Royal London YC and Snowden.
- 9.2.5 Race Marshals, who will be stationed aboard vessels flying a Race Marshal flag, are members of the Race Committee and will assist in directing competitors to the two special areas designated for boats waiting to start. Boats failing to respond to directions given by Race Marshals may be disqualified without a hearing (see SI 2.3).
- 9.3 The Race will be started in accordance with SI 9.4, which changes RRS 26. The Fleet warning signal displayed will be the Fleet Flag assigned in Table 1 on page 9.

9.4 Starting Times

The starting times for classes and fleets are shown in Table 1 on page 9.

9.5 Starting Line (see Diagram C)

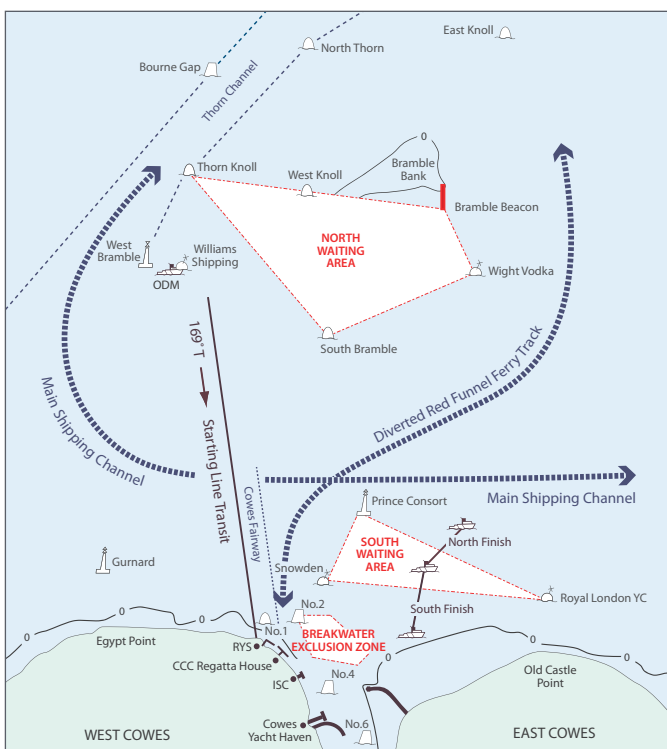
- 9.5.1 The starting line is formed by bringing the RYS FLAGSTAFF into line with the white line on the ORANGE DIAMOND ON THE CASTLE. Vertical light beams are installed at the RYS to identify the starting line transit. **These light beams are navigational aids only and do NOT constitute the starting line, nor will their failure cause any start to be postponed.**
- 9.5.2 The outer distance starting mark (ODM) will be a large Committee Vessel, displaying an ISC burgee, attached to the Williams Shipping Buoy, which may not lie on the starting line. In the unlikely event of the Committee Vessel not being attached, the ODM will be the Williams Shipping Buoy.

10 RECALLS

10.1 Individual Recall

- 10.1.1 The Race Committee may broadcast on VHF Channel 37A (M) and VHF Channel 72 sail numbers of boats that were OCS and have failed to start correctly. The broadcast will be made as soon as possible after checking but not before one minute after the start. Any failure to broadcast, or delay in so doing, shall not be grounds for redress. This changes RRS 62.1(a).
- 10.1.2 RRS Appendix A4.2 is changed in that a boat that is OCS will be scored with a time penalty of 5% of the boat's elapsed time rounded to the nearest second, unless the Race Committee decides that the boat has gained a significant advantage in the Race, in which case she will be scored as OCS.
- 10.1.3 A boat that is scored with an OCS time penalty will not be eligible for any 'Line Honours' prizes, and a boat which is scored as OCS will be ineligible to receive a finishing position.
- 10.1.4 The Race Committee will broadcast on VHF Channel 37A (M) and VHF Channel 72 at 0900, 1000 and 1100 a list of boats which have been scored with an OCS time penalty or have been scored as OCS (see SI 10.1.2). In the event of a postponement, the times of these broadcasts may be altered by the Race Committee, and the revised schedule will be notified to competitors on VHF Channel 37A (M) and VHF Channel 72.

DIAGRAM C : START / FINISH LINES & WAITING AREAS



10.2 General Recall

- 10.2.1 The starting signal for a recalled class will be not less than twenty minutes after the scheduled start of Fleet No 11 Purple. Additional details will be given on VHF Channel 37A (M) and VHF Channel 72. This changes RRS 29.2.
- 10.2.2 Boats returning after a General Recall shall keep clear of classes about to start. Boats seen to infringe this rule may be disqualified without a hearing (see SI 2.3).

11 RETIREMENT

- 11.1 Boats are requested to report their retirement to the Island Sailing Club, Cowes at the earliest opportunity by one of the following methods:
- by Text Message (see page 8 for instructions)
 - by telephone to 01983 296621
 - by VHF Radio on Channel 37A (M) (Call sign "Island Link") between 0815 and 2200 hours only (see SI 5.3).
- 11.2 On retirement from the Race, boats are requested to wear an ensign and to keep clear of boats that are still racing.

12 THE FINISH

12.1 Finishing Lines (see Diagrams C and D)

There are two Finishing Lines which will be situated just North of the East Cowes Breakwater. Boats are required to finish as designated below:

- The finishing line for Fleet 1 (Silver Grey), Fleet 2 (Day-Glo Orange), Fleet 4 (Pink), Fleet 6 (Green), Fleet 7 (Turquoise), and Fleet 10 (Day-Glo Green) will be the NORTH line between a yellow and black striped board on a central committee boat (displaying an ISC Burgee and a blue flag) and a yellow and black striped board on

a committee boat, displaying an ISC Burgee and a blue flag, moored approximately 250 metres to the North of the central committee boat. For ease of identification each committee boat will also carry a large Day-Glo Pink banner.

- The finishing line for Fleet 3 (Golden Brown + Sunsail), Fleet 5 (Black), Fleet 8 (Blue), Fleet 9 (White), and Fleet 11 (Purple) will be the SOUTH line between a yellow and black striped board on a central committee boat (displaying an ISC Burgee and a blue flag) and a yellow and black striped board on a committee boat, displaying an ISC Burgee and a blue flag, moored approximately 350 metres to the South of the central committee boat. For ease of identification each committee boat will also carry a large Day-Glo Pink banner.

12.2 Finishing Line Infringements

- 12.2.1 After crossing and clearing a finishing line, a boat that re-crosses either finishing line in any direction before the time limit may be disqualified without a hearing (see SI 2.3).
- 12.2.2 A boat crossing the wrong finishing line will be disqualified without a hearing and therefore will not be entitled to receive a prize or a finishing position (see SI 2.3).

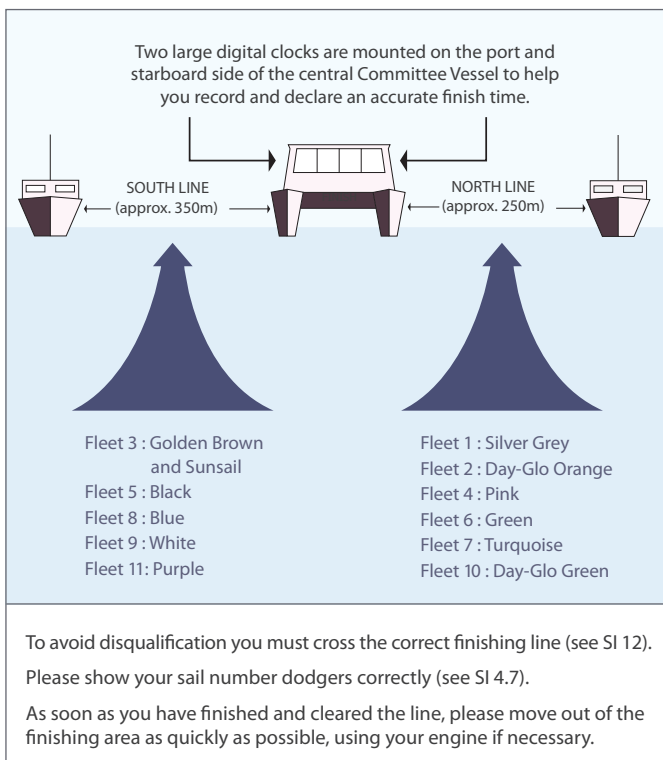
13 TIME LIMIT

- 13.1 The time limit for the Race is 2200 hours.
- 13.2 RRS 35 will not apply. Any boat that does not complete the course and finish before 2200 will be scored DNF.
- 13.3 When no boat finishes within the prescribed time limit, the Race will be abandoned and will NOT be re-sailed.

14 PENALTY SYSTEM

- 14.1 RRS 44 will not apply. A boat that may have broken a rule of RRS Part 2 (When Boats Meet) while racing may accept a time penalty, unless she has caused injury or serious damage or gained a significant advantage in the Race in which case she shall retire. The time penalty will be 2% of her elapsed time rounded to the nearest second.
- 14.2 A boat that has broken RRS 31 (Touching a Mark) may accept a time penalty, unless she has caused injury or serious damage or gained a significant advantage in the Race in which case she shall retire. The time penalty will be 2% of her elapsed time rounded to the nearest second.
- 14.3 A boat accepting a time penalty shall:
- Display a yellow flag at the first reasonable opportunity after the incident.
 - As soon as possible after the incident, but not before 0815, inform the Race Committee by VHF Radio on Channel 37A (M) (call sign 'Island Link'), or by other means, such as mobile telephone to 01983 296621 or 01983 248004, of her acceptance of the time penalty.
 - Report her acceptance and identify any other boat(s) involved to the Race Committee within two hours of her finish or by 2300 on the day of the Race, whichever is earlier. This acceptance shall be lodged on a specific form available at Cowes Combined Clubs (CCC), Regatta House, Bath Road, Cowes.
 - Declare at Cowes Combined Clubs (CCC), Regatta House, Bath Road, Cowes in accordance with SI 16.4.

DIAGRAM D : FINISHING LINE (FROM THE EAST)



- 14.4** A boat that has not fully complied with SI 14.3 may acknowledge an infringement before a hearing provided she did not cause injury or serious damage or gain a significant advantage. She will receive a penalty of 5% of her elapsed time, rounded to the nearest second.
- 14.5** A boat seeking to take a time penalty under SI 14.1 or 14.2 which has neither fully complied with the provisions of SI 14.3 nor acknowledged her infringement under SI 14.4 shall be deemed to have retired.
- 14.6 Limits on Penalties**
- 14.6.1** When a boat intends to take a penalty as provided in SI 14.1, and in the same incident has touched a mark, she need not take the penalty provided in SI 14.2.
- 14.6.2** A boat that takes a penalty shall not be penalised further with respect to the same incident unless she failed to retire after causing injury or serious damage or gained a significant advantage in the Race.
- 14.6.3** A boat may only accept one time penalty under SI 14.1 during the Race. After a second infringement, a boat shall either retire or protest and, in so doing, shall make clear her intention to the other boat involved.
- 14.7** Any boat that takes a time penalty under SI 14.1 or 14.2 shall not be eligible for any 'Line Honours' prizes.
- 14.8** A boat shall not be scored as having finished outside the time limit solely by the application of a time penalty.

15 PROTESTS

- 15.1** RRS 61.1(a) is changed by adding the following sentence: "The protesting boat shall additionally, as soon as reasonably possible following the incident, but not before 0815, inform the Race Committee by VHF Radio on Channel 37A (M) (Call sign "Island Link"), or by other means, such as mobile telephone to 01983 296621 or 01983 248004, of her intention to lodge a protest. Competitors involved in incidents on or near the finishing line should ensure that their intention to protest is prompt in order that the boat being protested can be informed as soon as possible."
- 15.2** A protest shall be written on an official ISC form and shall be lodged at Cowes Combined Clubs (CCC), Regatta House, Bath Road, Cowes within 2 hours of her finish or by 2300 on the day of the Race, whichever is the earlier. The Protest Committee may exceptionally extend this time limit. This changes RRS 61.3.
- 15.3** RRS 66 is changed in that a party to a hearing may ask for a reopening no later than 2 hours after being informed of the decision, or by 2300 on the day of the Race, whichever is the earlier.
- 15.4** Protest hearings will take place at Cowes Combined Clubs (CCC), Regatta House, Bath Road, Cowes on the day of the Race unless the Protest Committee exceptionally adjourns the hearing. This changes RRS 63.
- 15.5** The Race Committee will broadcast on VHF Channel 37A (M) and VHF Channel 72, from 0900 onwards, a list of boats which have notified their intention to lodge a protest and of protested boats (see SI 15.1). The name and/or sail number of the boats involved will be broadcast on three separate occasions at hourly intervals as soon as possible after each notification has been received by the Race Committee. Boats whose names or sail numbers are

broadcast should declare at Cowes Combined Clubs (CCC), Regatta House, Bath Road, Cowes in accordance with SI 16.4. Failure of the Race Committee to transmit all or some of this information shall not be grounds for redress or reopening the hearing should the Protest Committee proceed with a hearing under RRS 63.3(b).

- 15.6** The Race Committee will broadcast on VHF Channel 37A (M) and VHF Channel 72 at 0900, 1000 and 1100 a list of boats disqualified in accordance with SI 2.3. Infringements seen during the Race, or at the finish, may not be broadcast. Boats whose names or sail numbers are broadcast should declare at Cowes Combined Clubs (CCC), Regatta House, Bath Road, Cowes in accordance with SI 16.4.
- 15.7** In the event of a postponement, the times of broadcasts made in accordance with SIs 10.1.4, 15.5 and 15.6 may be altered by the Race Committee, and the revised schedule will be notified to competitors on VHF Channel 37A (M) and VHF Channel 72. Failure of the Race Committee to transmit all or some of this information shall not be grounds for redress. This changes RRS 62.1(a).
- 15.8** The pre-registered Race Mobile Phone number may be used by the Protest Committee to inform boats of protests that have been lodged against them and times for protest hearings. Competitors should therefore continue to check their Race Mobile Phones for messages for several hours after finishing.

16 DECLARATIONS AND TANKARDS

- 16.1** Every boat must declare her finishing time by one of the two following methods:
- a)** By Text Message, in the correct format (see Figure 1, on page 8), which must be sent from the pre-registered Race Mobile Phone within 30 minutes of her finishing time. Boats that are unable to use their registered phone on Race day will not be able to declare by Text Message and will need to complete and lodge a paper Declaration Form ashore (see SI 16.1(b))
- b)** By completing the paper Declaration Form (included with these instructions) and lodging it at one of the shoreside declaration points (see SI 16.3) within 2 hours of her finishing time and before the declaration point's closing time (see SI 16.3).
- 16.2** Except in exceptional circumstances, boats that fail to submit a valid declaration in accordance with SI 16.1 will not be given a finishing position.
- 16.3** Declarations made ashore must be lodged in accordance with the procedure indicated on the paper Declaration Form at one of the two shoreside declaration points:
- a)** Island Sailing Club, Cowes (closing time: 2300 hours).
- b)** East Cowes Marina Car Park (closing time: 2 hours after the last boat seen to finish or 2300 hours, whichever is the earlier).
- 16.4** Notwithstanding SI 16.1, any boat which has been involved in an incident that may have resulted in contact with another boat, or has used its engine in accordance with SI 3.6, or has accepted a time penalty in accordance with SI 14 or has been informed of a protest under RRS 61.1 or is likely to be a party to a protest, should not declare by Text Message, or ashore, but go directly to Cowes Combined

FIGURE 1 :TEXT DECLARATION INSTRUCTIONS

A complete set of instructions regarding SMS text declarations can be downloaded from the race website (<http://rtir.me/declarations>). Here are the essentials:

1. Within 30 minutes of finishing, reply to your welcome message or send a new message to **07797 803 955**.
2. If you finish the race correctly send your finish time, the boat ahead and the boat astern in this format :
1624 GBR1234T K987
3. If you retire from the race, send: **RETIRED**
4. If you do not start the race, send: **DNS**
5. Wait for a response confirming that your declaration has been received.
6. If you have not received a response within 10 minutes, your declaration has not been received! You must either send your declaration again or call 01983 296621 to report your declaration problem.

Clubs (CCC), Regatta House, Bath Road, Cowes. (See SIs 3.6, 14.3, 15.5 and 15.6.) Tankards will be available at the Regatta Centre for those competitors only.

- 16.5** A tankard will be awarded to every boat taking part in the Race. Tankards may be collected on the day of the race at either of the declaration points before the closing times specified in SI 16.3, or at the Island Sailing Club between 0900 hours and 1200 noon on Sunday 22nd June. Boats which have already declared by Text Message but who wish to collect a tankard onshore should complete PART A of the paper Declaration Form and take it to one of the declaration points.

17 SCORING

17.1 Corrected Time

In sequence from the shortest time after the elapsed time has been multiplied by the relevant time correction factor.

17.2 Elapsed Time

For one-design classes, times will be shown in chronological sequence from the shortest recorded time.

- 17.3** Boats whose sail numbers are not identified will be timed on the basis of their declaration.

18 RESULTS

The provisional results of the corrected or elapsed times will be posted on the display board system in the lower marquee of the Island Sailing Club and on electronic results boards as soon as possible. The final results will ONLY be published on the Round the Island Race website www.roundtheisland.org.uk

19 RECORDS

The Race Committee will ratify separate race records for multihull and monohull boats, based on elapsed time. The current records stand at 2h 52m 15s (multihull) and 3h 43m 5s (monohull).

20 PRIZES

The trophies and prizes for 1st in each class and/or division will be presented at the Island Sailing Club on Sunday 22nd June 2014 at 1200 noon (see Table 2 on page 10). Second prizes in each division may be collected from the Race Office. Other prizes, where applicable, may be collected from the Race Office.

Prizewinners are requested to inform the Island Sailing Club office by 1100 on Sunday 22nd June if they, or their representatives, will be attending the Prize Giving (tel: 01983 296621).

21 RISK STATEMENT

Rule 4 of the Racing Rules of Sailing states: "The responsibility for a boat's decision to participate in a race or to continue racing is hers alone,"





Sailing is by its nature an unpredictable sport and therefore inherently involves an element of risk. By taking part in the event, each competitor agrees and acknowledges that:

- a) They are aware of the inherent element of risk involved in the sport and accept responsibility for the exposure of themselves, their crew and their boat to such inherent risk whilst taking part in the event;
- b) They are responsible for the safety of themselves, their crew, their boat and their other property whether afloat or ashore;
- c) They accept responsibility for any injury, damage or loss, to the extent caused by their own actions or omissions;
- d) Their boat is in good order, equipped to sail in the event and they are fit to participate;
- e) The provision of a race management team, patrol boats and other officials and volunteers by the event organiser does not relieve them of their own responsibilities;
- f) The provision of patrol boat cover is limited to such assistance, particularly in extreme weather conditions, as can be practically provided in the circumstances;
- g) They are responsible for ensuring that their boat is equipped and seaworthy so as to be able to face extremes of weather; that there is a crew sufficient in number, experience and fitness to withstand such weather; and that the safety equipment is properly maintained, stowed and in date and is familiar to the crew; and
- h) Their boat is adequately insured, with cover of at least £2,000,000 sterling against third party claims.

22 RYA CHARTER

Competitors should note that Island Sailing Club events implement the RYA Racing Charter and that competitors are required to sail in compliance with the Charter, which can be found at the front of the RYA rule book (Racing Rules of Sailing 2013-2016) or at www.rya.org.uk/racing/charter (see NoR 17).

TABLE 1 : CLASSES, FLAGS and START TIMES

Fleet Start Order	Fleet Flag	Class	Class ID Flag	Warning Signal	'p' Flag	1 Minute Remove 'p'	Start Time
1	Silver Grey	Open 60	 IC Numeral 6	0620	0625	0629	0630
		IRC Group 0 (1.096 and above)	 IC Numeral 0				
		Class 40	 Class 40 Class Flag				
		RC 44	 IC Numeral 4				
		Clipper Yachts (Clipper 68 and Clipper 70 Class Yachts)	 Clipper Class Flag				
2	Day-Glo Orange	Multihulls Grand Prix and MOCRA Racing (LOA 9.15m and over)	None	0630	0635	0639	0640
		Multihulls Grand Prix and MOCRA Racing (LOA under 9.15m)	 M				
		Multihulls Bridgedeck Catamaran Cruiser (LOA 9.15m and over)	None				
		Multihulls Bridgedeck Catamaran Cruiser (LOA under 9.15m)	 NN1				
		Extreme 40	 Extreme 40 Class Flag				
		GC32	 GC32 Class Flag				
		Gaffers Division 1 - LWL of 28ft and above Division 2 - LWL 23ft and above, but below 28ft	 NN4				
		Gaffers Division 3 - LWL of less than 23ft	 NN9				
3	Golden Brown	Sportboat	 NN5	0640	0645	0649	0650
		707	 NN7				
		SB20	 NN6				
		Sunsail F40	 Sunsail Class Flag				
4	Pink	IRC Group 1 (1.032 to 1.095)	None	0650	0655	0659	0700
5	Black	ISC Rating System Group 4 (1.013 and above)	None	0700	0705	0709	0710
6	Green	IRC Group 2 (0.971 to 1.031)	None	0710	0715	0719	0720
		J/80	 NN0				
7	Turquoise	IRC Group 3 (0.970 and below)	None	0720	0725	0729	0730
8	Blue	ISC Rating System Group 5 (0.992 to 1.012)	None	0730	0735	0739	0740
		Contessa 32	 G				
		Nicholson 32	 NN3				
9	White	ISC Rating System Group 6 (0.975 to 0.991)	None	0740	0745	0749	0750
		Classic Racing Yachts racing under ISCRS (LOA 9.6m and over)	 K				
		Classic Racing Yachts racing under ISCRS (LOA under 9.6m)	 J				
		Modern Classic Racing Yachts racing under IRC (LOA of 30ft and over)	 L				
10	Day-Glo Green	ISC Rating System Group 7 (0.931 to 0.974)	None	0750	0755	0759	0800
		Folkboat	 NN2				
11	Purple	ISC Rating System Group 8 (0.930 and below)	None	0800	0805	0809	0810

IC = International Code NN = Naval Numeral

TABLE 2 : WINNERS' TROPHIES TO BE AWARDED AT THE PRIZE GIVING AT 1200 NOON ON SUNDAY 22nd JUNE
(Other winners' trophies, as detailed in the Notice of Race, will be available for collection from the Race Office)

Line Honours Prizes <i>First boat to cross the finishing line</i>		ISC Rating System Classes <i>First boat on corrected time</i>		One Design Classes <i>First boat on elapsed time</i>	
Monohull	Observer Trophy and JPMorgan Asset Management Trophy	First Overall	Silver Gilt Roman Bowl and JPMorgan Asset Management Salver	Contessa 32	Contessa Challenge Trophy
IRC Rated Classes	Conrad Ritblat Trophy and JPMorgan Asset Management Salver	Second Overall	Fidelis Trophy	Folkboat	Red Lion Trophy and Jack Knights Trophy
ISCRS Classes	Henri Lloyd Challenge Trophy	Third Overall	Geisco Trophy	707	Turbo UK Cup
Gaffers	Shamrock Challenge Trophy	Group 4	Crankshaw Bowl and divisional prizes	J/80	Nautica Watches Challenge Trophy
Multihull Grand Prix & MOCRA Racing Classes	Freedom Challenge Bowl	Group 5	Jimmie Read Memorial Cup and divisional prizes	Nicholson 32	Halmatic Trophy
Classic Racing Yacht	Field Barnacle	Group 6	Fedalah Challenge Trophy and divisional prizes	SB20	Laser Trophy
IRC Rated Classes <i>First boat on corrected time</i>		Group 7	Spread Eagle Trophy and divisional prizes	Sunsail F40	Small Luxury Hotels of the World Challenge Cup
First Overall	Gold Roman Bowl and JPMorgan Asset Management Salver	Group 8	Trafalgar 200 Trophy and divisional prizes	Class 40	Class 40 Round the Island Race Trophy
Second Overall	Silver Roman Bowl and JPMorgan Asset Management Salver	Overall Team	Arun Yacht Club Team Challenge Trophy	Open 60	Lombard Marine Finance Challenge Trophy
Third Overall	Royal Thames Challenge Trophy and JPMorgan Asset Management Salver	Second Overall Team	Jeroboam Trophy	Clipper 68	Vaphio Cup
Fourth Overall	Royal London Challenge Cup and JPMorgan Asset Management Salver	Family Crewed Boats	JPMorgan Asset Management Family Trophy	Special Race Trophies	
Group 0	JPMorgan Trophy	Chartered Surveyors	Shepherds Trophy	Tenacity Trophy Awarded to the last boat to finish within the time limit.	
Group 1	Owen Parker Memorial Trophy and divisional prizes	Young Skipper	Raymarine Round the Island Young Sailor Trophy	Special Race Trophies that are awarded after the Race	
Group 2	Yeoman Challenge Trophy and divisional prizes	Other Rated Classes <i>First boat on corrected time</i>		Nautica Outstanding Seamanship Award Awarded for an act of outstanding seamanship taking place on the day of the J.P. Morgan Asset Management Round the Island Race.	
Group 3	Champagne Mumm Challenge Cup and divisional prizes	Classic Racing Yacht	Renaissance Trophy	Charity Cup Awarded to the boat that raises the most donations for charity on the J.P. Morgan Asset Management Round the Island Race page of the JustGiving website at: http://www.justgiving.com/roundtheisland	
Overall Team	Methuselah Trophy	Gaffers - Division 1	Jubilee Trophy	J.P. Morgan Asset Management Round the Island Race Official Photographers Patrick Eden www.patrickeden.co.uk Paul Wyeth www.pwpictures.com	
Second Overall Team	Jeroboam Trophy	Gaffers - Division 2	Discovery Trophy		
Sailing School Boats	John Franks Trophy	Gaffers - Division 3	Foxhound Trophy		
Chartered Surveyors	Shepherds Trophy	Multihull Grand Prix	Dean and Reddyhoff Trophy		
X-Yachts	X-Yachts Trophy	Multihull MOCRA Racing	Trifle Trophy		
National Sonata	Sonata Salver	Multihull Bridgedeck Catamaran Cruiser	HOYA Trophy		
Beneteau First 40	Dream Yacht Charters First 40 Trophy	Multihull Overall	Golden Miller Challenge Cup		
Quarter Tonner	Elephant Trophy				
Mini Tonner	Kemp Sails Mini Tonner Trophy				
Sportsboat	Edward Heath Trophy				
Modern Classic Racing Yacht	Spirit Trophy				

Win a Dream Yacht Charter!



Dream Yacht Charter is offering you the chance to win a 7-Day Charter of any three-cabin yacht in 1 of 39 worldwide destinations, including Port Hamble in the United Kingdom.

With 39 locations worldwide and more than 500 boats from which to choose, Dream Yacht Charter is everywhere you want to sail. Choose your vacation by Destination, Bareboat Charter, Luxury Crewed Charter, or by the Cabin Vacation packages. Our bases are in the Caribbean, the Mediterranean, the Indian Ocean, North America, the Pacific Ocean and the United Kingdom.

For more information on how to enter the competition visit: rtir.me/dyc

Henri Lloyd - Elite Offshore range



Henri Lloyd has launched the ELITE Offshore range for 2014. The LIGHTEST, most BREATHABLE offshore gear EVER without compromise. FACT. Visit our Henri Lloyd Pop-Up Sailing Store in the Race Village to SEE and FEEL the difference.

Henri Lloyd have developed brand new fabric technology with GORE-TEX® which makes this offshore gear 30% lighter and 20% more breathable than the best in class predecessors, without compromising durability or waterproofness.

Look out for our exclusive J.P. Morgan Asset Management Round the Island Race competition entry form in your skippers' packs, drop it into the stand and you could win a Henri Lloyd ELITE Offshore jacket and HiFits worth £825.

We shall be retailing the exclusive J.P. Morgan Asset Management Round the Island Race merchandise collection in our sailing store in the Race Village and in our High Street store. Henri Lloyd ambassador Sir Ben Ainslie CBE will also be making a special appearance on our stand after racing. See our Facebook page www.facebook.com/Henrilloyd63 for confirmed timings.

Festival of the Sea

The J.P. Morgan Asset Management Round the Island Race will be the 'headline act' for The Isle of Wight Festival of the Sea 2014. This lively 8-day celebration of the Island's rich maritime history takes place across the Island over five days between Monday 16th and Monday 23rd June. There will be a wide range of activities, events and promotions taking place, all revolving around the theme of the sea.

During the Race weekend there will be street entertainment along Cowes High Street, and the two-day "Red Funnel Cowes Food Show" will take place in Cowes Yacht Haven. Come along and join the fun.



Entertainment schedule

Friday

- 1000 - 0000 ISC bar open
- 1500 - 0030 Race Village and bars open
- 1600 - 1800 Isle of Wight Radio live broadcast
- 1800 - 1900 Raymarine Weather Briefing (at the Island Sailing Club)
- 1800 - 1900 DJ set
- 1900 - 2100 **Morning Glory**
Five piece who play the very best of British rock.
- 2100 - 2130 DJ set
- 2130 - 2230 **Cornerstone**
The consummate party band, who are always updating their playlist but also know all the classics.
- 2330 - 0000 DJ set

Saturday

- 1000 - 0000 ISC bar open
- 1000 - 1630 Isle of Wight Radio live broadcast
- 1000 - 0030 Race Village and bars open
- 1100 - 1800 **Busking on the High Street**
An eclectic company of musicians will be entertaining the crowds along the High Street at the following locations: outside Sainsbury's, the HSBC Bank and PHG (at the bottom of Market Hill), along The Cut and by the Wishing Well on Shooters Hill.
- 1630 - 1830 **Beeno**
Acoustic band with a love of blues and folk music.
- 1830 - 1900 DJ set
- 1900 - 2100 **Juicebox**
Great function band whose repertoire covers every decade from the sixties.
- 2100 - 2145 DJ set
- 2145 - 2345 **Black Daniels**
Fantastic Blues and Funk outfit with horn section.
- 2345 - 0030 DJ set

Sunday

- 1000 - 1800 ISC bar open
- 1200 - 1300 Prize Giving (at the Island Sailing Club)

The above events will take place in the Race Village unless otherwise stated

Cowes map



Haven Knox-Johnston - 'Your Boat Immortalised' Calling all boat owners!



Haven Knox-Johnston, the leading pleasure craft Insurers, are once again taking up position in Cowes Yacht Haven and invite you to come to our stand and meet the renowned yachting contemporary

artist Stephen Lees. You will have the chance to win a unique Stephen Lees original, including an interpretation of your yacht, an opportunity to visit Stephen's gallery in Lymington to watch your own picture being completed and enjoy a lunch for you and your family or crew with the artist in the New Forest.

The friendly team from Haven Knox-Johnston will of course also be on hand to deal with your insurance enquiries and look forward to seeing you in Cowes.

Nautica winch grinding competition



Nautica Watches are throwing down the gauntlet to see who can post the fastest time on the Lewmar grinder machine. Visit the marquee in the

Race Village for a chance to win a Nautica NST 02 worth £260. Timex watches will be available from T.M. Taylor and Nautica watches from Benzie, both on Cowes High Street.

Whisky tasting with Old Pulteney



Old Pulteney, producers of award-winning single malt whisky, is looking forward to offering tastings of its 12 year old expression this year, along

with its new Navigator expression and recently released Stroma liqueur. The maritime malt will be offered to those at the Raymarine Weather Briefing, as well as at various times in the Race Village throughout the Round the Island Race weekend.

Support the official race charity



Support the Ellen MacArthur Cancer Trust, official Charity to the Race, and help young people aged between 8-24 regain their confidence on their way to recovery from cancer.

Visit the Ellen MacArthur Cancer Trust stand in the Race Village to test your skills on our NEW Sailing Simulator or dress up and have your photo taken in our Photobooth.

Don't forget to tweet your photos with #raceforall. Representatives from the Trust will be on hand to provide you with more information about how your generosity will give young people from hospitals throughout the UK the chance to experience life changing sailing trips in the future. To find out more, visit www.ellenmacarthurcancertrust.org

An easy way to raise funds for the Ellen MacArthur Cancer Trust is by tweeting using the hash tag #raceforall. For every tweet using #raceforall, J.P. Morgan will donate £1.00 until the 'Tweetermeter' target of £4,000 is reached. View the latest fundraising tweets at www.roundtheisland.org.uk/raceforall.

Red Jet crossings

SATURDAY 21ST JUNE

Southampton to Cowes (departures)

0615, 0715, 0815 then every 30 mins (15 & 45 mins past the hour) until 1845 then hourly (45 mins past the hour) until 2345.

Cowes to Southampton (departures)

0645, 0745, 0845 then every 30 mins (15 & 45 mins past the hour) until 1915 then hourly (15 mins past the hour) until 2315

CROSSING TIME – APPROX 23 MIN

Water taxis

Free service

J.P. Morgan Asset Management and the Island Sailing Club have worked together to put on a free water taxi service for competitors. This service will be running between 3pm and midnight on Friday 20th June and between 2pm and 1am on Saturday 21st June, as follows:

Folly Water Buses

There will be 3 Folly water buses running a 20 minute service between The Folly and Cowes Yacht Haven if there is room to berth, otherwise Town Quay.

Jenny Boats

There will be 2 Jenny boats operating a half hourly service between East Cowes Marina, "E" Pontoon, "W" Pontoon and either Cowes Yacht Haven or Town Quay.

Sally Water Taxis

There will be 5 Sally Water Taxis operating throughout the Medina and Cowes Roads.

ISC Launches

An Island Sailing Club launch will run between the moorings east of the Club and the ISC pontoon. Be aware that this service will not be running all evening. VHF Channel 37a(M) or 08.

Other services

Additional "pay as you go" water taxis will be available over the weekend from the following:

Harbour Taxi

07855 767918 VHF Channel 77

Sally Water Taxi (outside free hours)

07831 331717 VHF Channel 06

Find out about the latest Volvo range



Look out for Team Volvo sailors, London 2012 silver medallist Luke Patience and his team-mate, double World Champion Elliot Willis, who will be taking part in the Race onboard a Farr 65 alongside BBC TV commentator David Dimbleby.

The top British men's 470 team will be on the Volvo Car UK stand in Cowes Yacht Haven at 1500 on Saturday after the Race to talk about their campaign for gold in Rio 2016 and sign autographs. The pair will also be available to give advice on cars from the latest Volvo range that will be on display. This includes the XC60, the perfect car for drivers in search of adventure, as driven by Elliot.

As part of Volvo Car UK's ongoing support of British sailing, RYA members can benefit from exclusive savings on a wide range of brand new Volvo cars. Talk to one of the expert staff on a Volvo display to find out more about the RYA Affinity Scheme or visit www.rya.org.uk/go/volvo.

Raymarine®

Weather briefing

All competitors are invited to the Island Sailing Club at 1800 on Friday 20th June, the night before the race, for the essential Raymarine Weather Briefing. Competitors will be able to hear the latest weather and tidal information live, combined with expert tactical advice from professional meteorologist and Met Office-trained, Chris Tibbs. In addition to this, competitors will be able to evaluate the weather prior to the race by viewing the course overview and tidal strategy video here: www.raymarine.co.uk/view/?id=7418.

Competitors can also sign up to the Raymarine website to receive free email weather updates prior to the race here: www.raymarine.co.uk/RTIR2014



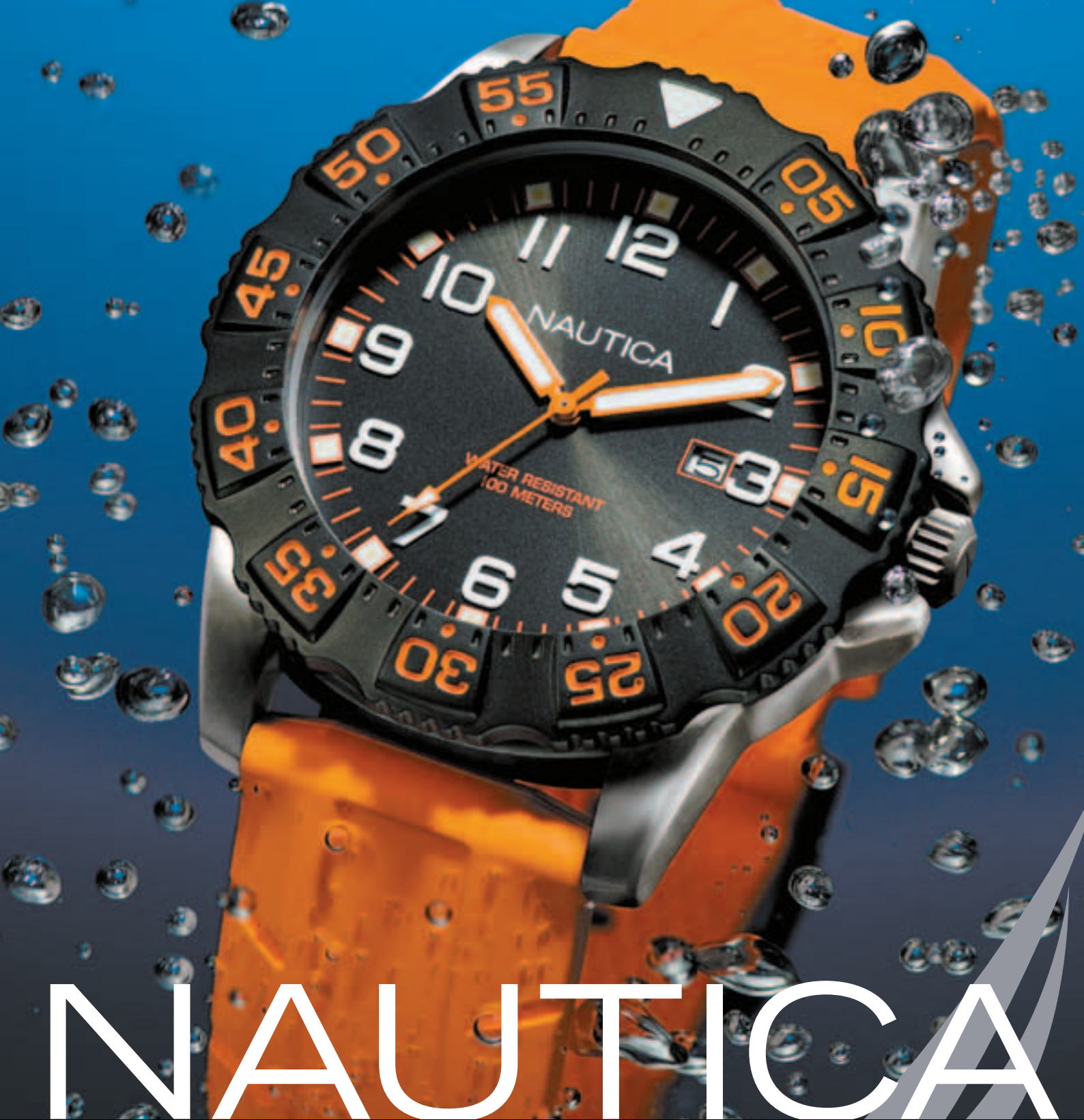
Photo gallery

Our online photo gallery allows anyone to share their pictures of the race with fellow competitors and sailing fans around the world. Last year thousands of images were uploaded to the gallery by people taking part, and many wonderful shots were featured on our gallery home page.

If you'd like to share your pictures of the 2014 race, you'll just need to select your favourite images and visit the official website to upload them to the gallery. Once they've been approved by the ISC, your pictures will be available for everyone to see - and because each image will be tagged with the name of the boat featured, you'll also be able to see who has captured pictures of your own race around the Island. Don't forget your cameras on race day!



photograph submitted by Vadim Volkovoy in 2013



NAUTICA

Inspired by sailing, Nautica's functionality reflects an energetic lifestyle combining distinctive styling, bold colours and unique design.

Featured Product: Nautica NSR 103

RRP: £150.00 Available from www.watchshop.com

COWES FOOD SHOW

FESTIVAL OF THE SEA SPECIAL



A GREAT FAMILY DAY OUT!

21-22 JUNE

AT THE REGATTA VILLAGE IN COWES YACHT HAVEN

- **COOKERY THEATRE WITH TOP LOCAL CHEFS**
- **LOCAL FOOD & DRINK PRODUCERS**
- **LIVE MUSIC**
- **ARTS & CRAFTS**
- **CHILDREN'S ACTIVITIES**
- **+ MUCH MORE**

WWW.COWESFOODSHOW.CO.UK

WWW.FACEBOOK.COM/COWESFOODSHOW



RED FUNNEL
THE ORIGINAL ISLE OF WIGHT FERRIES

Not taking part in the race?

Watch the start on board the special Red Jet excursion.

Visit redfunnel.co.uk/racestart to find out more.

RedJet
Turn up and take off

TEAM SPONSOR



THE MARITIME MALT

www.clipper-oldpulteney.com

Old Pulteney encourages you to savour this fine single malt responsibly.

TAKE THE EASY ROUTE

with eSeries powered by LightHouse™ II



eSeries

- **Completely redesigned** for clarity and simplicity, eSeries with LightHouse II makes everything easier
- **More Powerful** with smarter touch controls and all new features
- **Point and Steer** with Evolution's 9-axis autopilot control
- **Connect anywhere** onboard with Wi-Fi and Raymarine mobile apps
- **Network** with any LightHouse powered MFD

For more information, go to
www.raymarine.com



INNOVATION • QUALITY • TRUST

Raymarine®

ELITE
OFFSHORE

THE **LIGHTEST**
MOST BREATHABLE
OFFSHORE GEAR **EVER**
WITHOUT COMPROMISE
FACT



ELITE OFFSHORE
30% LIGHTER
20% MORE BREATHABLE

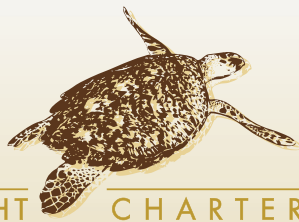
Elite Offshore is in a class of its own and was created with the objective of delivering a once in a generation step change in wearer comfort.

The result is no laboratory phenomenon! This win-win combination of significantly enhanced breathability and lightness delivers to you significant perceptible improvement in performance and all without compromising durability of waterproofness.

FOR MORE INFORMATION
VISIT WWW.HENRILLOYD.COM/ELITE



HENRI LLOYD
50 YEARS OF PIONEERING SPIRIT



DREAM YACHT CHARTER
WORLD WIDE SAILING

Book the Solent, the Mediterranean or the Caribbean today.

Down The Coast or Around The Globe, A Dream Yacht Is There.

Dream Yacht Charter is the world's largest privately owned charter company. Charter bareboat, skippered, fully crewed, or by the cabin in the BVI, Greece, Turkey, Croatia, Seychelles, Antigua, the Solent and more.

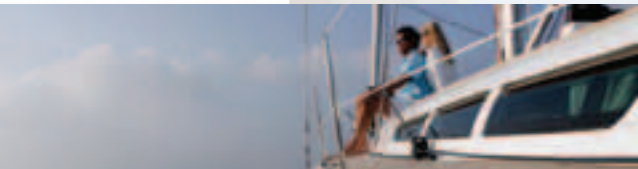
Book A Dream Yacht Charter Today.



Bahamas



Caribbean



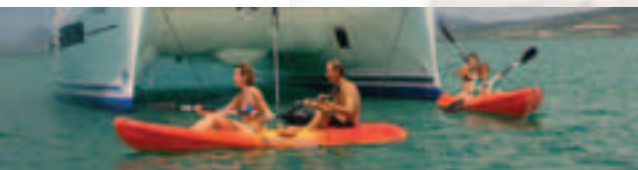
Mediterranean



Indian Ocean



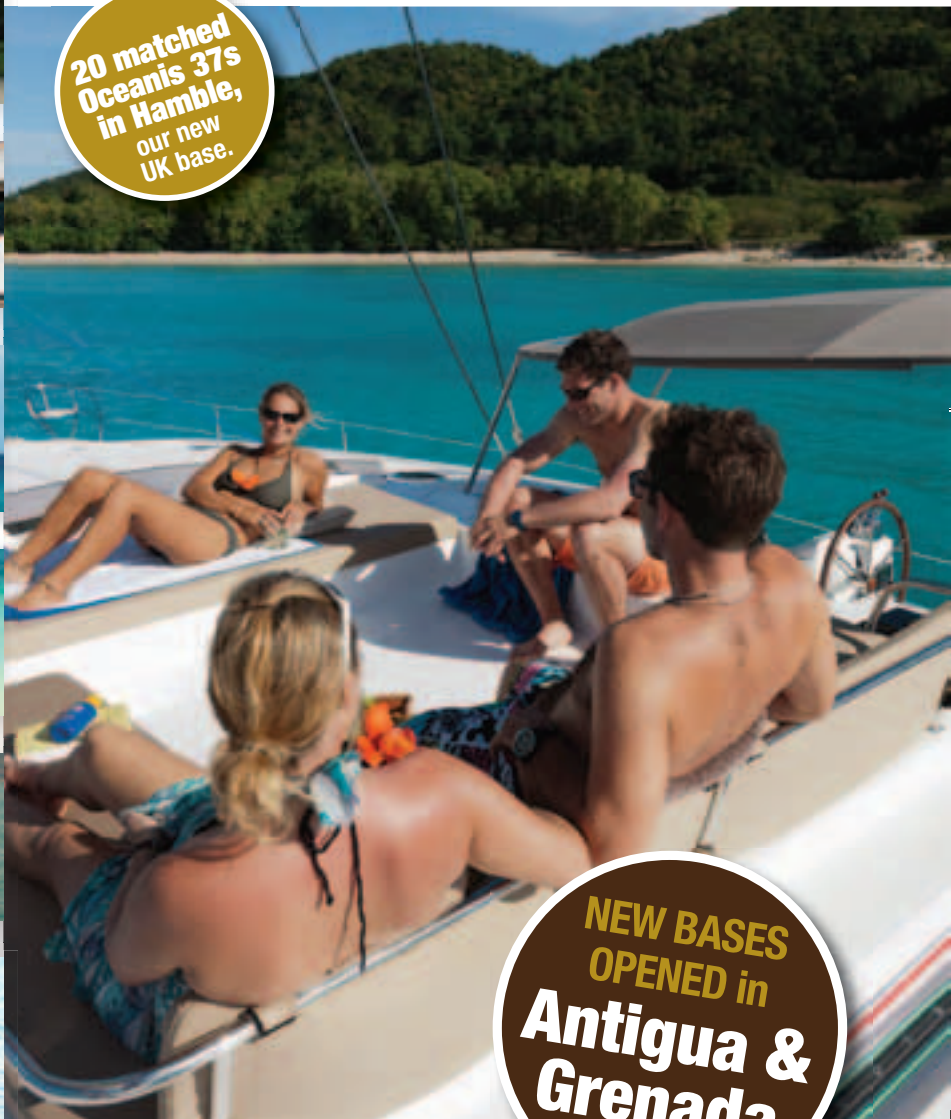
Asia



Pacific Ocean



North America



20 matched
Oceanis 37s
in Hamble,
our new
UK base.

NEW BASES
OPENED in
**Antigua &
Grenada**

Call Or Visit Our Web Site To View Our Special Offers



www.DreamYachtCharter.com • uk@dreamyachtcharter.com • 02380 455527

With **37 locations worldwide** and more than **450 boats**, Dream Yacht Charter is everywhere you want to sail.

Bareboat Charters • Skippered Charters • Fully Crewed Luxury Charters • By The Cabin Holidays • Yacht Sales and Management



The RYA has driven a great deal

So you can drive a great Volvo



The Volvo Car UK support of British Sailing and the RYA, means you can benefit from a hugely valuable offer as well as servicing, finance and accessory deals at your local Volvo dealership.



Find out how much you could save
at www.rya.org.uk/go/volvo

Official car partner to the J.P. Morgan Asset
Management Round the Island Race 2014



Fuel consumption for the Volvo Range in MPG (l/100 km): Urban 18.6 (15.2) - 74.3 (3.8), Extra Urban 34.9 (8.1) - 91.1 (3.1), Combined 26.4 (10.7) - 83.1 (3.4). CO2 emissions 249 - 88g/km. MPG figures are obtained from laboratory testing and intended for comparisons between vehicles and may not reflect real driving results.



J.P.Morgan
Asset Management



Round the
Island Race